



# CEREBROSPINAL MENINGITIS OUTBREAK IN NIGERIA

## Situation Report

(2<sup>nd</sup> June, 2017)

### Highlights

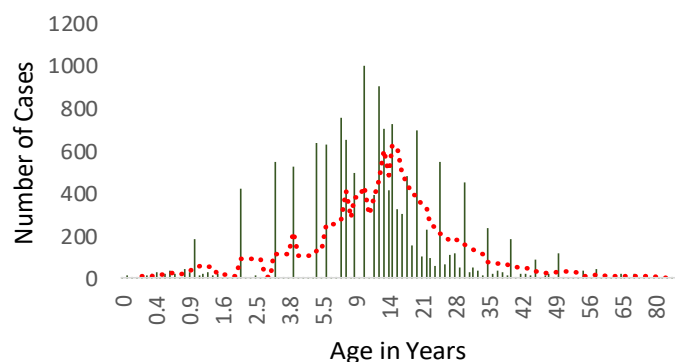
- From 13<sup>th</sup> December, 2016 to 2<sup>nd</sup> June, 2017, a total of 14,473 suspected cases and 1,155 deaths (CFR= 8%) of CSM have been reported from 25 States
- Of the 460 laboratory confirmed cases, 371 (80.6%) were *Neisseria meningitidis* serogroup C
- In the last four weeks (Epi-week 16-19), 24 Local Government Areas (LGAs) have been in alert/ epidemic status in three States — Zamfara, Sokoto and Katsina
- Second phase of reactive vaccination completed in Zamfara on 26<sup>th</sup> of May, 2017 with 97% coverage and in Yobe on 24<sup>th</sup> May, 2017 with 105% coverage.

### Epi summary

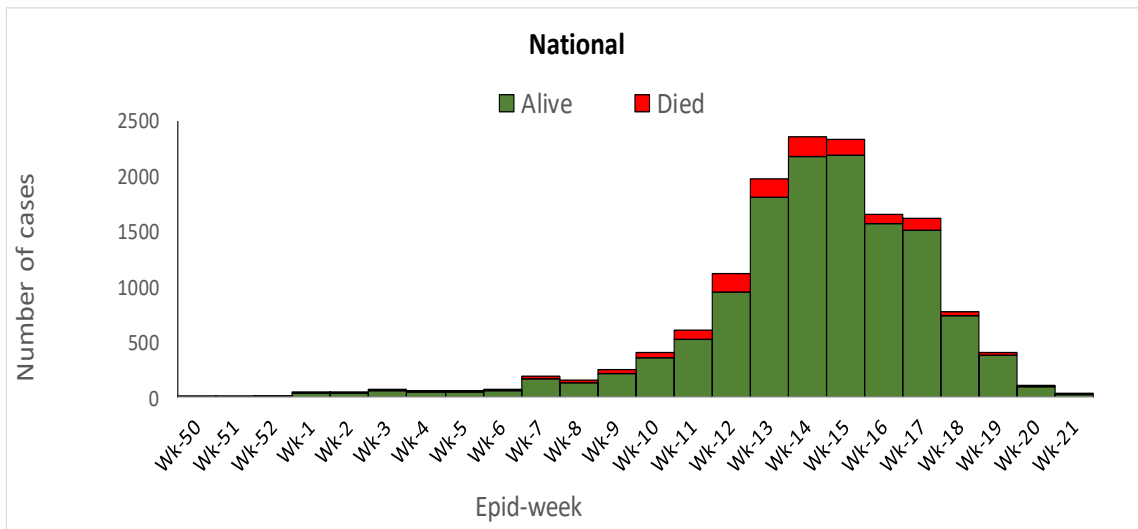
- The first case occurred in Zamfara State during Epidemiology Week 50 (December 12– 18, 2016)
- A total of 14,473 cases with 1155 deaths (CFR=8.0%) have been reported
- Of the reported cases, 998 (6.9%) were laboratory tested; of which 460 (46.6%) were confirmed positive for bacterial meningitis
- *Neisseria meningitidis* serogroup C remains the predominant (80.6%) cause of meningitis amongst those who tested positive
- The 5-14 year age group remains the most affected with a total of 6774 (46.9%) cases
- In the current three affected States — Zamfara, Sokoto and Katsina— a total of 12 LGAs have reached the alert threshold and are therefore under enhanced surveillance, while 12 LGAs are in epidemic threshold, with full outbreak investigation and control measures being implemented

Key Indicators	Number
Total cases reported	14,473
Total Deaths	1,158
Confirmed cases	460
Total samples tested	998
States that have reported at least one suspected case	25
States with at least one LGA currently in Epidemic	3
States with at least one LGA currently in Alert	3
LGAs in Alert in the last four weeks (wk17 to wk20)	12
LGAs in Epidemic in the last four weeks (wk17 to wk20)	12
Cumulative LGAs ever in Epidemic	34

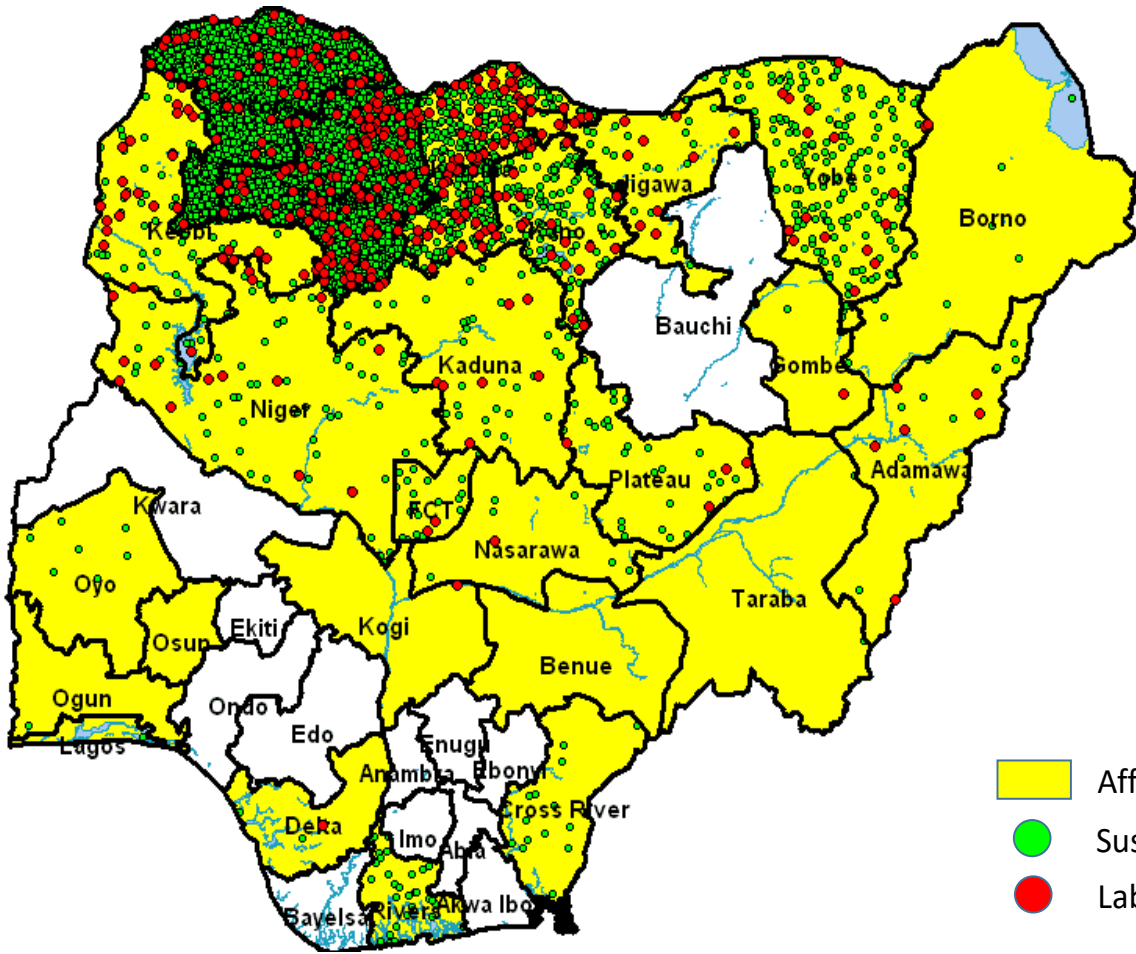
Age Distribution of CSM Cases as at 1st June, 2017



# EPIDEMIC CURVES OF CSM OUTBREAK IN NIGERIA AS AT 25<sup>TH</sup> MAY, 2017

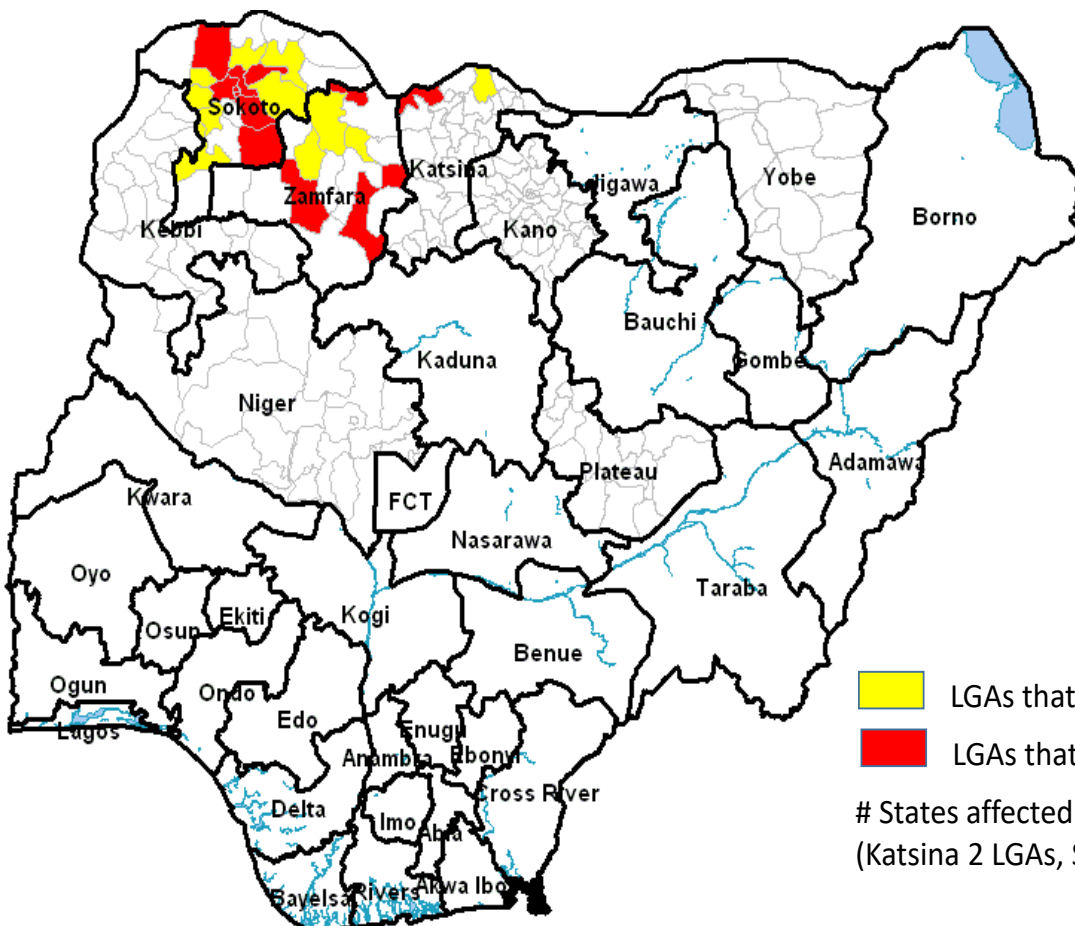


# Distribution of CSM Cases as at 1-June-2017



- Affected: States = 25; LGAs = 24
- Suspected Cases = 14456
- Lab-confirmed Cases = 465

# LGAs in Alert/Epid within the last four Weeks (Wk18-21), 2017



- LGAs that crossed Alert Threshold = 11
  - LGAs that crossed Epidemic threshold= 12
- # States affected = 3:  
(Katsina 2 LGAs, Sokoto 15 LGAs, Zamfara 6 LGAs)