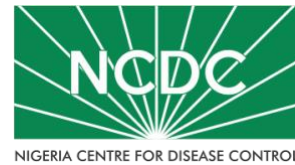


COVID-19 SITUATION REPORT

SITUATION REPORT 184

Sunday, 30th August 2020



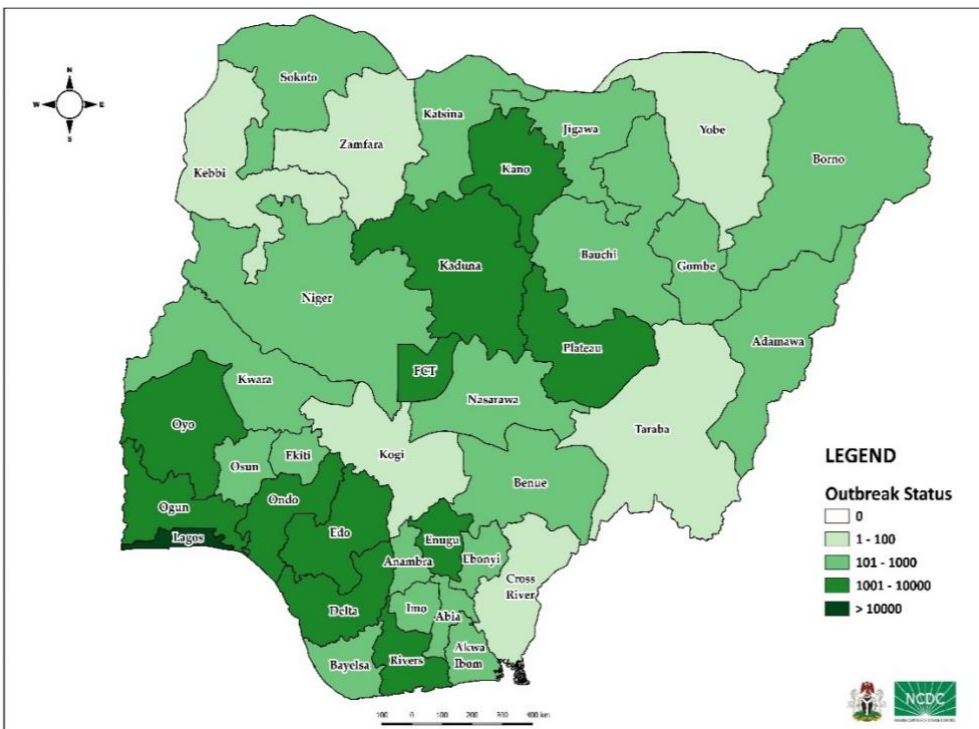
DATA AS REPORTED AND ACCURATE BY NCDC AS AT MIDNIGHT 30TH AUGUST 2020

HIGHLIGHTS

- One hundred and thirty-eight (**138**) confirmed cases were reported in the last 24 hours from **14** states – Plateau (55), Lagos (15), Ebonyi (11), Oyo (11), Abia (8), Anambra (7), FCT (7), Rivers (7), Kaduna (6), Ondo (5), Kwara (3), Bauchi (1), Benue (1) and Edo (1).
- One hundred and ninety-nine (**199**) discharges have been reported in the last 24 hours in **11** states – Plateau (46), Bauchi (31), Abia (28), Kaduna (27), Ondo (20), Ekiti (18), Anambra (9), Rivers (9), FCT (7), Osun (3) and Ogun (1).
- **Two** deaths were reported in the last 24 hours from **two** states – Abia (1) and Osun (1).
- All **36** states in Nigeria, and the FCT, have reported a confirmed case.

STATE OF THE NATION

Figure 1: Map of Nigeria showing 36 states and FCT affected by COVID-19



SITUATION UPDATES

Total (New in the last 24 hours)

SAMPLES TESTED

403,347 (1,277)

CONFIRMED CASES

53,865 (138)

AFFECTED STATES INCLUDING FCT

37

DISCHARGED CASES

41,513 (199)

CONFIRMED FATALITIES

1,013 (2) – 1.9% CFR

DEMOGRAPHICS

MALE – 34,250 (64%)

FEMALE – 19,615 (36%)

MOST AFFECTED AGE GROUP

31 - 40 (25%)

PERSONS OF INTEREST

11,622 (Total)

11,546 (99.3% - Exceeded Follow Up)

PROVENANCE

TRAVEL HISTORY – 850 (1%)

CONTACTS – 12,774 (24%)

UNKNOWN EXPOSURE – 40,241 (75%)

GLOBAL UPDATES

TOTAL NUMBER OF CASES

24,854,140 (838,924 deaths)

COUNTRIES & TERRITORIES AFFECTED

216*

*Excluding the 2 International Conveyance

GENERAL FACT SHEET – DATA AS AT 30TH AUGUST 2020

Table 1: States with reported laboratory-confirmed COVID-19 cases, recoveries, deaths and days since last reported case

STATES	CONFIRMED CASES		DISCHARGED CASES		DEATHS		TOTAL ACTIVE CASES	DAYS SINCE LAST REPORTED CASE
	TOTAL	NEW	TOTAL	NEW	TOTAL	NEW		
Lagos	18,119	15	15,228	0	202	0	2,689	0
FCT	5,156	7	1,531	7	50	0	3,575	0
Oyo	3,118	11	1,952	0	37	0	1,129	0
Edo	2,578	1	2,300	0	100	0	178	0
Plateau	2,498	55	1,374	46	29	0	1,095	0
Rivers	2,141	7	1,969	9	57	0	115	0
Kaduna	2,120	6	1,977	27	12	0	131	0
Delta	1,744	0	1,540	0	47	0	157	1
Kano	1,725	0	1,537	0	54	0	134	2
Ogun	1,646	0	1,489	1	26	0	131	1
Ondo	1,539	5	1,380	20	31	0	128	0
Enugu	1,155	0	907	0	21	0	227	1
Ebonyi	984	11	931	0	27	0	26	0
Kwara	961	3	773	0	25	0	163	0
Katsina	789	0	457	0	24	0	308	2
Osun	779	0	732	3	17	1	30	1
Abia	771	8	697	28	8	1	66	0
Borno	740	0	667	0	36	0	37	7
Gombe	723	0	636	0	23	0	64	1
Bauchi	667	1	581	31	14	0	72	0
Imo	527	0	193	0	11	0	323	1
Benue	452	1	216	0	9	0	227	0
Nasarawa	434	0	298	0	12	0	124	1
Bayelsa	391	0	345	0	21	0	25	1
Jigawa	322	0	308	0	11	0	3	45
Akwa Ibom	278	0	229	0	8	0	41	3
Ekiti	262	0	203	18	4	0	55	1
Niger	241	0	214	0	12	0	15	3
Adamawa	221	0	180	0	15	0	26	1
Anambra	214	7	168	9	18	0	28	0
Sokoto	158	0	138	0	16	0	4	7
Kebbi	93	0	82	0	8	0	3	2
Taraba	87	0	73	0	5	0	9	5
Cross River	82	0	73	0	8	0	1	6
Zamfara	78	0	73	0	5	0	0	10
Yobe	67	0	59	0	8	0	0	31
Kogi	5	0	3	0	2	0	0	58
Total	53,865	138	41,513	199	1,013	2	11,339	

States, including FCT, are arranged in descending order by number of total confirmed cases and then alphabetical order

SELECTED CHARTS

Figure 2: Daily Epidemic Curve of Confirmed Cases (WK9 – WK35)

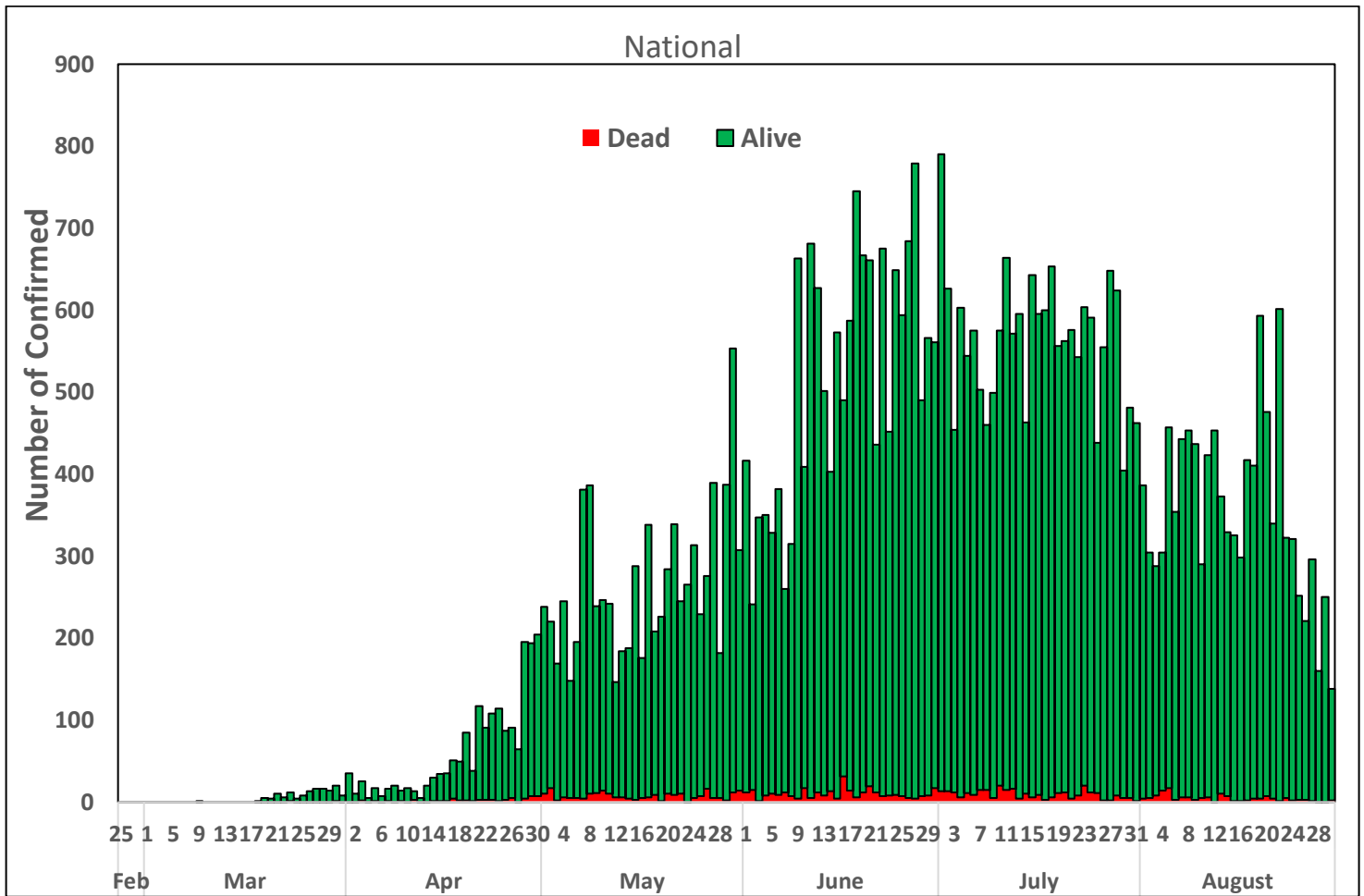
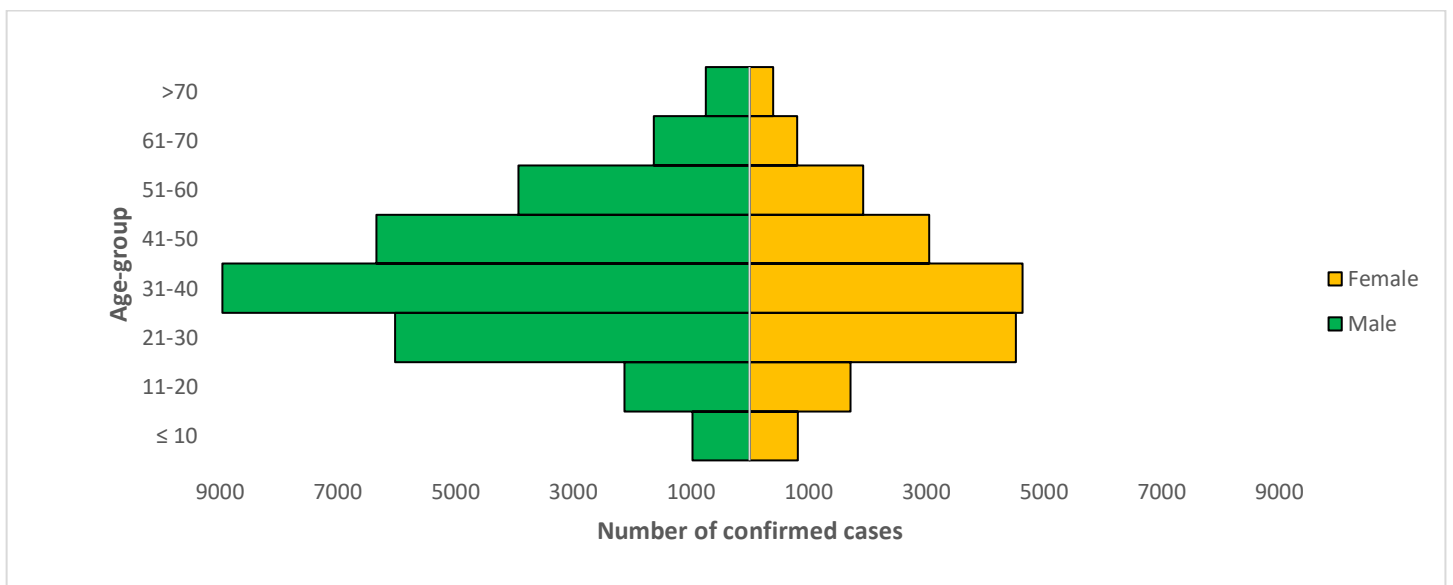


Figure 3: Age-Sex Distribution of Confirmed Cases (WK9 – WK35)



PREPAREDNESS

Since the confirmation of the first case on 27th February 2020, the NCDC has released advisories and statements to help Nigerians and affected groups in particular to respond to the pandemic

- NCDC recently published the first edition of a quick reference guide on setting up sample collection centre - [A step by step guide on setting up a sample collection centre](#)
- NCDC has launched an online course on [Infection, Prevention and Control \(IPC\) for COVID-19](#) NCDC eLearning platform
- Ahead of forthcoming elections in the country, NCDC has issued [Guidelines for Conducting Elections During the COVID-19 Outbreak in Nigeria](#).
- To protect our elders, and those with pre-existing medical conditions, NCDC has issued an [Advisory for Vulnerable Groups](#).
- NCDC has released [guidelines on the re-opening of places for worship](#).
- NCDC has released [Strategies to Improve Surveillance for COVID-19 Guidance for States](#)
- The Nigeria Police Force has released COVID-19 operational guidelines for the [Police and other Law Enforcement Agencies](#) in Nigeria
- Guidelines have been issued for the [safe transportation of remains of persons suspected or confirmed to have died of COVID-19](#)
- Information on diagnostics of the COVID-19 virus can be found in our [detailed FAQ document](#).
- To increase our testing capacity, NCDC has issued guidelines for the [integration of private labs](#).
- Guidelines for [businesses and employers](#) have been updated.
- NCDC has updated its [case definition](#) , [community case definition](#) and [case management guide](#).
- NCDC releases periodic [public health advisories](#) to Nigerians on the COVID-19 disease.
- To adhere to post-lockdown measures, NCDC has released an [advisory on the use of face masks](#), as well as information on the [Use of Cloth face masks](#) and [how to make your cloth face masks](#).
- NCDC has released guidelines for the [management of pregnant women and nursing mothers](#) during the pandemic.
- To address burials of loved ones who die from COVID-19, guidelines have been issued to advise on the [management of dead bodies](#).
- For health centres managing cases, the following documents have been released- a guideline for the [Rational Use of Personal Protective Equipment in the care of COVID-19 cases](#).
- As part of plans to increase the testing capacity of the country, the NCDC published a [National Strategy to Scale Up Access to Coronavirus Disease Testing in Nigeria](#) document.
- The Presidential Task Force has published policies and announcements on COVID-19 [available on the website of the Presidency](#) – including presidential addresses, task force updates and information on livelihood and economic support.

RESPONSE

On 28th February 2020, a multi-sectoral Emergency Operations Centre (EOC) was activated at Level 3 – the highest emergency level in Nigeria –led by NCDC in close coordination with the State Public Health EOCs (PHEOC).

- **Continued tracking and collation of data through Situation Reports (SITREPs) shared from states**
- **Supported supervision and monitoring visits on Infection Prevention and Control in treatment centres and health facilities across FCT (University of Abuja Teaching Hospital, National Hospital, EHA clinic, UN clinic, This day dome)**
- **Supplied NCDC Travelers kits to Points of Entry (POE) across the country**
- **Obtained ethical approvals to conduct clinical management study to determine the management and outcome of COVID-19 cases from the State Ministry of Health (SMOH) and University College Hospital (UCH) Ibadan, Ethical Review Committees (ERCs) in Oyo State**
- **Ongoing technical committee meeting with Federal Ministry of Education on school reopening**
- **Commenced testing at the Bayelsa State molecular laboratory in Yenagoa**

- Completed roll-out of Surveillance and Outbreak Response Management Analysis System (SORMAS) in Osun and Benue states
- 34 laboratory scientists of the Nigerian Airforce Medical Corps were trained on sample collection, packaging and transportation
- Deployed response materials, commodities and Rapid Response Team (RRT) kits to several states
- Developed and dissemination Bi-weekly messaging priorities and key messages to stakeholders and states
- All education materials can be found via www.covid19.ncdc.gov.ng