



SITUATION REPORT

Nigeria Centre For Disease Control (NCDC)

www.ncdc.gov.ng

PLOT 800 EBITU UKIWE STREET, JABI ABUJA, NIGERIA. TOLL FREE CALL: 0800-970000-10. E: info@ncdc.gov.ng



@NCDCgov

TITLE:	YELLOW FEVER MONTHLY SITUATION REPORT IN NIGERIA
SERIAL NUMBER:	09
EPI-WEEKS:	14 - 18
DATE:	1st – 30th April, 2019

HIGHLIGHTS

- **In this reporting month of April, 2019:**
 - Three hundred and thirty two (332) suspected cases were recorded.
 - Three (3) new presumptive positive cases were recorded
 - NCDC Central Public Health Laboratory (CPHL) reported 1 new presumptive positive case from Imo State - (Orsu LGA)
 - Yusuf Danshoho Memorial Hospital (YDMH) Kaduna reported 1 presumptive case - case from Kebbi - (Arewa Dandi LGA)
 - Gombe Specialist Hospital (GSH) Gombe reported 1 presumptive case from -(Gombe LGA)
 - Three new confirmed cases from the Institute Pasteur (IP) Dakar from Edo State - (Uhunmwode -2, Ikpoba-Okha -1).
 - Last IP Dakar confirmed cases were reported 18th April, 2019
 - Nineteen States (19) have recorded at least one confirmed case from Institute Pasteur (IP) Dakar since the onset of the outbreak in 2017
 - Yellow fever response activities are being coordinated by the Yellow Fever Technical Working Group (YF TWG).
- **From 1st January – 30th April, 2019:**
 - 930 suspected cases have been reported in 447 (57.8%) LGAs.
 - All suspected cases reported had blood samples collected.
 - 35 presumptive positive and twelve inconclusive cases from 12 states in 32 LGAs: Table 1
 - 12 confirmed cases were reported from 2019 samples sent to Institute Dakar [Edo (7) confirmed and 1 inconclusive) Ondo (2), Imo (1) and Osun (1)]
 - One death of suspected yellow fever case has been recorded from Adamawa
 - Case fatality rate (CFR) is 0.11%
 - Rapid response teams have been deployed to Abia, Imo and Osun States.

SUMMARY OF OUTBREAK 2017-2018

A yellow fever outbreak has been active in Nigeria since September, 2017:

...PROTECTING THE HEALTH OF NIGERIANS



- From 2017 to 2018, 163 cases were confirmed in 17 States: Kwara (8), Kogi (12), Kano (1), Zamfara (19), Kebbi (7), Nasarawa (3), Niger (1), Katsina (2), Edo (90), Ekiti (2), Rivers (1), Anambra (1), FCT (11), Benue (1), Delta (1), Ondo (2) and Abia (1): in 52 Local Government areas (LGAs).
- From September 2017 to December 2018, 283 samples (presumptive positive - 246 and inconclusive - 37) were sent to IP Dakar for re-confirmation.
- All Nigerian states (36 + FCT) reported 4,132 suspected cases in 616 (79.6%) LGAs.
- Of all suspected, probable and confirmed cases, 90 deaths were recorded with 31 deaths among confirmed cases.
- The case fatality ratio (CFR) for all cases (suspected, probable and confirmed) is 2.2%, and 19.0% for confirmed cases
- Yellow Fever preventive mass vaccination campaigns (PMVC) have been completed in 12 states, led by NPHCDA:
 - 2013 PMVC phase 1 Nasarawa, Cross River, Akwa Ibom.
 - 2018 Phase 2a: Kogi, Kwara and Zamfara and in 58 political wards in 25 LGAs in Borno State.
 - 2018 phase 2b PMVC: Sokoto, Kebbi, Niger, FCT, Plateau and Borno (3 LGAs (Askira/Uba, Chibok, Konduga) States.
 - Yellow fever Reactive vaccination campaigns were implemented in Katsina (Danja LGA), Edo (13 LGAs and Benue (Vandekeiya)
 - 2019 phase 3 PMVC will be implemented in all LGAs where no YF campaigns have been implemented in Edo, Ekiti, Katsina and Rivers States

EPI- SUMMARY

1: Showing All Affected States and Cases with Yellow Fever as at Week 18, 30th April, 2019

Description	Abia	Adamawa	Akwa Ibom	Anambra	Bauchi	Bayelsa	Benue	Borno	Cross Rivers	Delta	Ebonyi	Edo	Ekiti	Enugu	FCT	Gombe	Imo	Jigawa	Kaduna	Kano	Katsina	Kebbi	Kogi	Kwara	Lagos	Nasarawa	Niger	Ogun	Ondo	Osun	Oyo	Plateau	Rivers	Sokoto	Taraba	Yobe	Zamfara	Total	
Total Number of cases in the linelist	17	11	7	56	15	5	39	67	12	11	6	43	10	24	14	15	47	27	14	16	88	139	11	20	3	37	8	15	23	9	17	19	9	17	20	25	14	930	
Attack Rate Per 100,000 population	0.4	0.3	0.1	1.0	0.7	0.2	0.7	0.1	0.3	0.2	0.2	1.0	0.3	0.3	0.3	0.4	0.8	0.4	0.2	0.1	1.1	3.0	0.2	0.6	0.0	1.4	0.3	0.3	0.5	0.2	0.2	0.4	0.1	0.3	0.6	0.7	0.3	0.5	
Number of LGAs with suspected cases	7	7	76	15	15	4	17	16	6	8	3	13	7	11	5	5	22	15	8	12	23	20	8	9	3	11	6	10	11	5	15	11	7	11	9	9	7	447	
Number of LGAs with Presumptive /inconclusive cases	0	0	0	2	1	0	0	0	0	1	1	8	0	3	0	1	5	0	0	0	1	2	0	0	0	0	0	1	4	1	0	0	0	1	0	0	0	32	
Number of LGAs with confirmed cases from IP Dakar	0	0	0	0	0	0	0	0	0	0	0	4	0	0	0	0	1	0	0	0	0	0	0	0	0	0	0	0	1	1	0	0	0	0	0	0	0	7	
Number suspected cases with Blood sample collected in Nigeria	17	11	7	56	15	5	39	67	12	11	6	43	10	24	14	15	47	27	14	16	88	139	11	20	3	37	8	15	23	9	17	19	9	17	20	25	14	930	
Number of Presumptive Positives in Nigeria	0	0	0	2	2	0	0	0	0	1	1	11	0	2	0	1	4	0	0	0	0	3	0	0	0	0	0	1	5	1	0	0	0	0	1	0	0	0	35
Number with inconclusive results in Nigeria	0	0	0	0	0	0	0	0	0	1	0	4	0	1	0	0	1	0	0	0	0	3	0	0	0	0	0	1	1	0	0	0	0	0	0	0	0	0	12
Total number of samples sent to Dakar	0	0	0	2	2	0	0	0	0	2	1	15	0	3	0	1	5	0	0	0	0	6	0	0	0	0	0	2	6	1	0	0	0	1	0	0	0	0	47
Number positive cases from IP Dakar	0	0	0	0	0	0	0	0	0	0	8	0	0	0	0	1	0	0	0	0	0	0	0	0	0	0	0	2	1	0	0	0	0	0	0	0	0	12	
Total number negative in Dakar	0	0	0	2	2	0	0	0	0	2	1	7	0	3	0	0	3	0	0	0	0	5	0	0	0	0	0	1	4	0	0	0	0	0	0	0	0	0	30
Number awaiting result from Dakar	0	0	0	0	0	0	0	0	0	0	0	0	0	0	0	1	1	0	0	0	0	1	0	0	0	0	0	1	0	0	0	0	0	0	0	1	0	0	5
Number of deaths from all cases positives	0	1	0	0	0	0	0	0	0	0	0	0	0	0	0	0	0	0	0	0	0	0	0	0	0	0	0	0	0	0	0	0	0	0	0	0	0	0	1
Number of deaths from IP Dakar confirmed	0	0	0	0	0	0	0	0	0	0	0	0	0	0	0	0	0	0	0	0	0	0	0	0	0	0	0	0	0	0	0	0	0	0	0	0	0	0	0

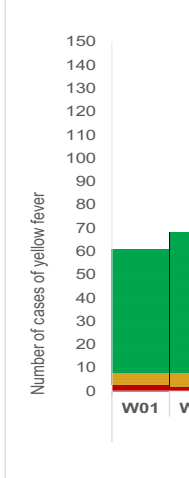


Figure 1: Epidemic Curve of All Cases of Yellow Fever in Nigeria as at Week 18, 30th April, 2019

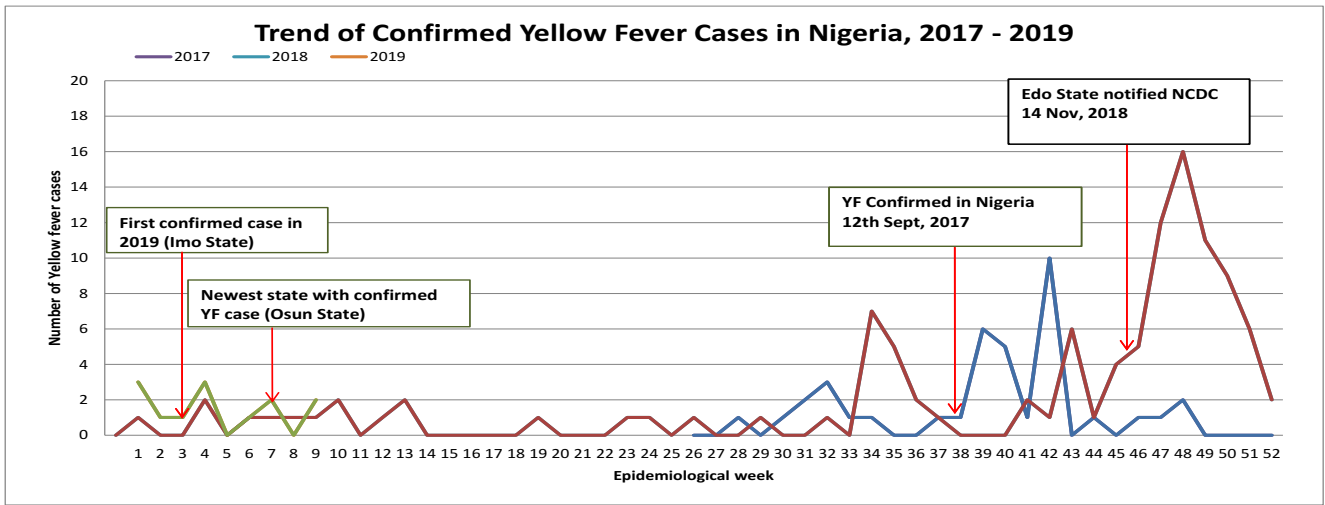


Figure 2: Trend of Confirmed Cases of Yellow Fever in Nigeria 2017 – 2019

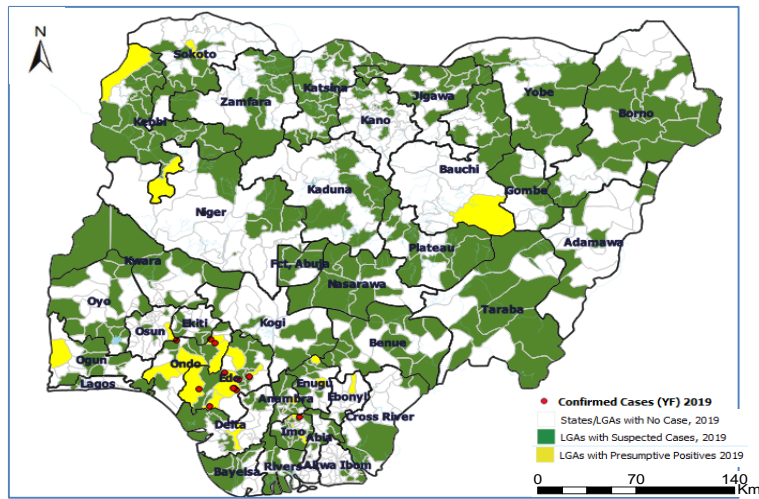
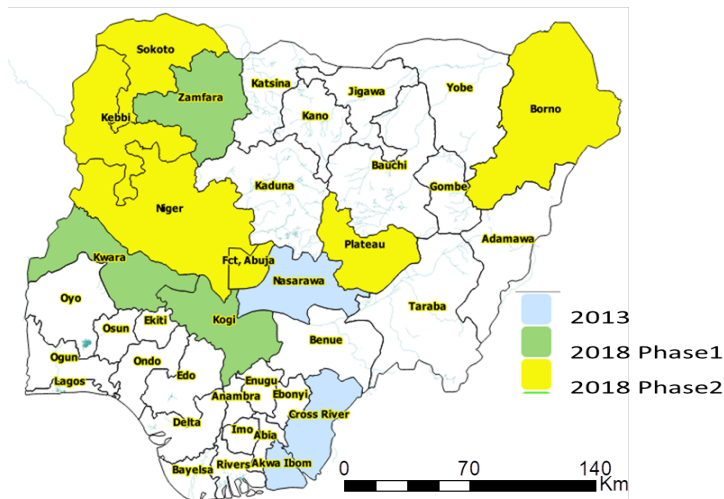


Figure 3: Map of Nigeria Showing States with Suspected /Presumptive/Confirmed Cases as at Week 18, 30th April, 2019



	State	Population Census	Target Population
Phase 3 - 2019	Kastina	8,506,596	7,315,673
	Rivers	8,008,465	6,887,280
	Edo	4,550,369	3,913,317
	Ekiti	3,545,745	3,048,341
Phase 4 - 2020	Kano	13,854,062	11,914,494
	Abia	3,901,620	3,355,394
	Anambra	5,825,118	5,009,601
	Imo	5,742,354	4,938,424
Phase 5 - 2021	Delta	5,980,944	5,143,612
	Benue	6,015,633	5,173,444
	Kaduna	8,649,467	7,438,541
	Bauchi	6,984,964	6,007,069

Figure 5: Map showing States that implemented PMVC/proposed PMVC from 2019-2021

