

# COVID-19 SITUATION REPORT

## SITUATION REPORT 207

Tuesday, 22<sup>nd</sup> September 2020



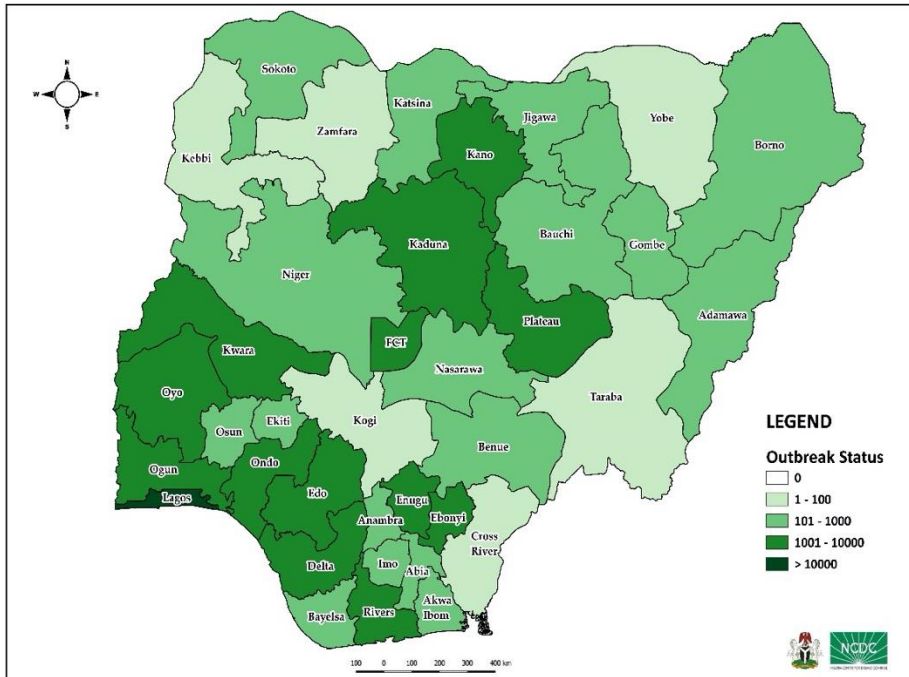
DATA AS REPORTED AND ACCURATE BY NCDC AS AT MIDNIGHT 22<sup>nd</sup> SEPTEMBER 2020

### HIGHLIGHTS

- One hundred and seventy-six (**176**) confirmed cases were reported in the last 24 hours from **14** states – Lagos (73), Plateau (50), FCT (17), Rivers (8), Ondo (6), Niger (5), Ogun (5), Edo (3), Kaduna (3), Oyo (2), Bauchi (1), Bayelsa (1), Delta (1), Nasarawa (1)
- One hundred and sixty-two (**162**) discharges have been reported in the last 24 hours in **nine** states – Oyo (57), Plateau (44), Kaduna (21), Delta (12), Rivers (11), Bauchi (6), FCT (6), Edo (3) and Ogun (2).
- **No** death was reported in the last 24 hours.
- All **36** states in Nigeria, and the FCT, have reported a confirmed case.

### STATE OF THE NATION

Figure 1: Map of Nigeria showing 36 states and FCT affected by COVID-19



### SITUATION UPDATES

Total (New in the last 24 hours)

SAMPLES TESTED

**487,786<sup>1</sup> (3,019)**

CONFIRMED CASES

**57,613 (176)**

AFFECTED STATES INCLUDING FCT

**37**

DISCHARGED CASES

**48,836 (162)**

CONFIRMED FATALITIES

**1,100 (0) – 1.9% CFR**

DEMOGRAPHICS

MALE – 36,683 (64%)

FEMALE – 20,930 (36%)

MOST AFFECTED AGE GROUP

31 - 40 (26%)

PERSONS OF INTEREST

**11,777 (Total)**

**11,710 (99.4% - Exceeded Follow Up)**

PROVENANCE

TRAVEL HISTORY – 850 (1%)

CONTACTS – 15,391 (27%)

UNKNOWN EXPOSURE – 41,372 (72%)

GLOBAL UPDATES

TOTAL NUMBER OF CASES

**31,174,627 (962,613 deaths)**

COUNTRIES & TERRITORIES AFFECTED

**216\***

\*Excluding the 2 International Conveyance

**<sup>1</sup>- Includes 716 backlog of reported negative samples tested in the last 1 week in 14 laboratories with distribution as follows:**

NCTBRL JUTH (Plateau)- 224; UNTH GeneXpert (Enugu)-112; UBTH (Edo)-78; BML (Akwa Ibom)-74; ISTH (Edo)-45; GH Onitsha (Anambra)-31;

TSSH Jalingo (Taraba)-31; UCTH (Cross River)-28; BRML (Bauchi)-27; AKTH (Kano) -23; BCVL (Oyo)-20; UPTH (Rivers)-10; GH Takum (Taraba)-7; Accunalysis (Anambra)-6

## GENERAL FACT SHEET – DATA AS AT 22<sup>nd</sup> SEPTEMBER 2020

Table 1: States with reported laboratory-confirmed COVID-19 cases, recoveries, deaths, samples tested and days since last reported case

STATES	CONFIRMED CASES		DISCHARGED CASES		DEATHS		TOTAL ACTIVE CASES	TOTAL SAMPLES TESTED	DAYS SINCE LAST REPORTED CASE
	TOTAL	NEW	TOTAL	NEW	TOTAL	NEW			
Lagos	19,055	73	15,246	0	204	0	3,605	120,017	0
FCT	5,583	17	4,927	6	77	0	579	58,889	0
Plateau	3,304	50	2,448	44	31	0	825	29,962	0
Oyo	3,233	2	2,259	57	39	0	935	21,441	0
Edo	2,615	3	2,430	3	107	0	78	16,027	0
Kaduna	2,359	3	2,248	21	34	0	77	18,165	0
Rivers	2,263	8	2,157	11	59	0	47	24,823	0
Delta	1,800	1	1,650	12	49	0	101	10,024	0
Ogun	1,772	5	1,721	2	28	0	23	12,438	0
Kano	1,734	0	1,656	0	54	0	24	45,860	4
Ondo	1,606	6	1,515	0	35	0	56	7,615	0
Enugu	1,285	0	1,166	0	21	0	98	4,830	1
Ebonyi	1,038	0	1,007	0	30	0	1	5,866	3
Kwara	1,025	0	925	0	25	0	75	5,806	2
Abia	881	0	847	0	8	0	26	6,818	4
Katsina	848	0	457	0	24	0	367	18,376	3
Gombe	839	0	710	0	25	0	104	16,275	1
Osun	817	0	783	0	17	0	17	4,382	2
Borno	741	0	703	0	36	0	2	11,383	22
Bauchi	692	1	664	6	14	0	14	8,164	0
Imo	562	0	217	0	12	0	333	4,214	2
Benue	473	0	413	0	10	0	50	3,634	4
Nasarawa	449	1	325	0	13	0	111	3,886	0
Bayelsa	395	1	370	0	21	0	4	2,049	0
Jigawa	322	0	308	0	11	0	3	2,888	68
Ekiti	317	0	294	0	6	0	17	6,387	2
Akwa Ibom	288	0	268	0	8	0	12	2,561	5
Niger	259	5	232	0	12	0	15	3,596	0
Adamawa	234	0	198	0	16	0	20	2,095	2
Anambra	232	0	184	0	19	0	29	1,553	7
Sokoto	161	0	142	0	17	0	2	3,569	5
Taraba	95	0	73	0	6	0	16	788	11
Kebbi	93	0	84	0	8	0	1	862	25
Cross River	85	0	74	0	9	0	2	1,203	5
Zamfara	78	0	73	0	5	0	0	412	33
Yobe	75	0	59	0	8	0	8	657	3
Kogi	5	0	3	0	2	0	0	243	81
<b>Total</b>	<b>57,613</b>	<b>176</b>	<b>48,836</b>	<b>162</b>	<b>1,100</b>	<b>0</b>	<b>7,677</b>	<b>487,786</b>	

States, including FCT, are arranged in descending order by number of total confirmed cases and then alphabetical order

SELECTED CHARTS

Figure 2: Daily Epidemic Curve of Confirmed Cases (WK9 – WK39)

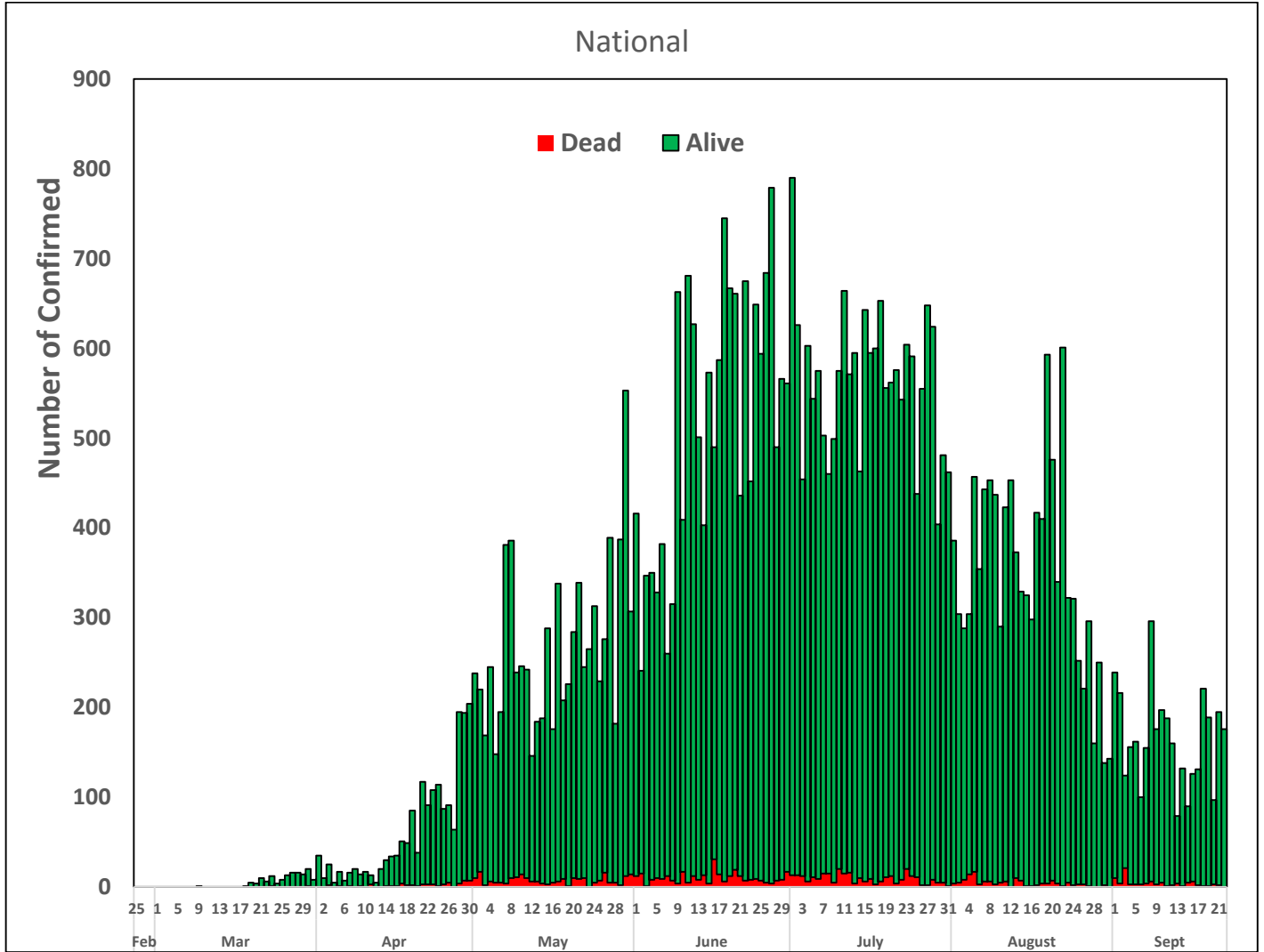
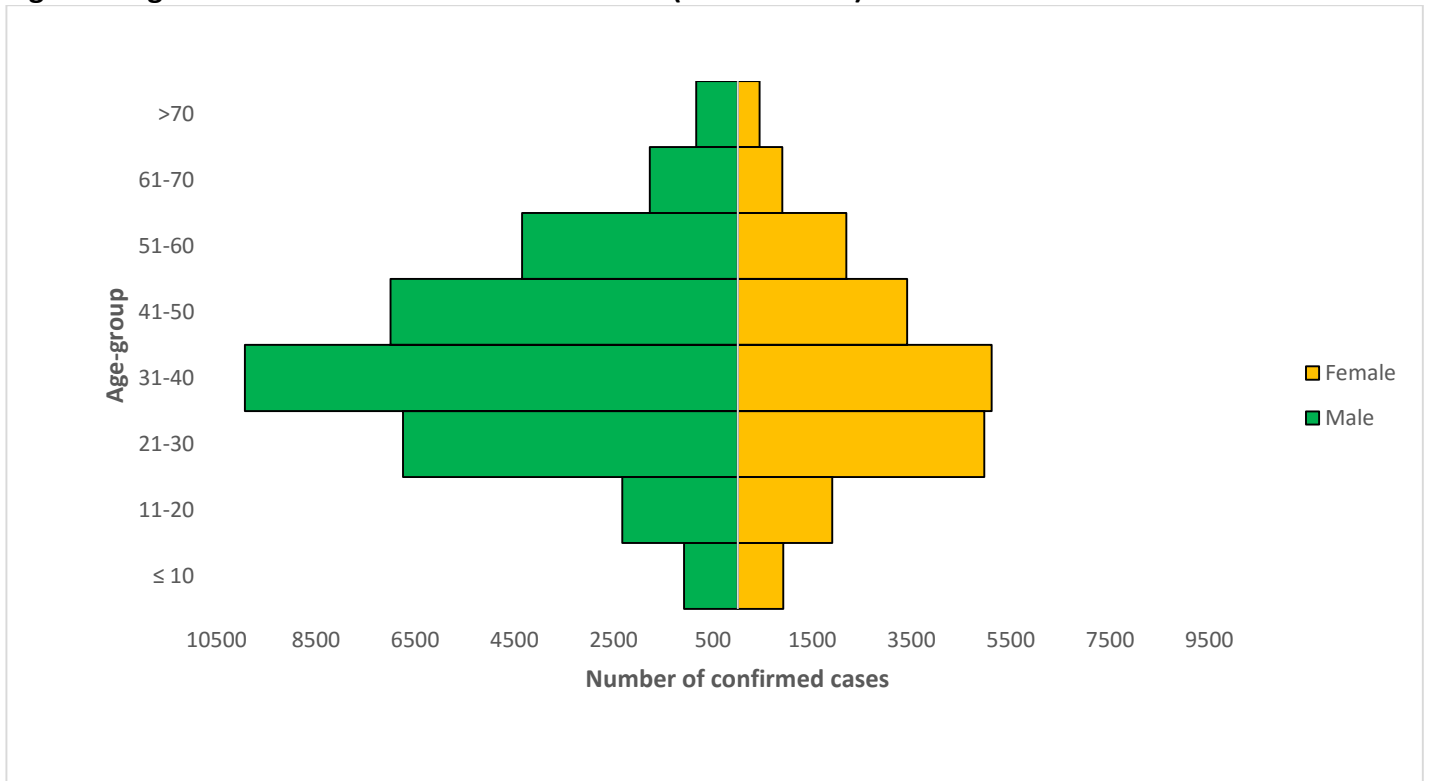


Figure 3: Age-Sex Distribution of Confirmed Cases (WK9 – WK39)



## PREPAREDNESS

Since the confirmation of the first case on 27<sup>th</sup> February 2020, the NCDC has released advisories and statements to help Nigerians and affected groups in particular to respond to the pandemic

- NCDC published second interim guidance – Infection Prevention and Control: [Recommendations during health care provision for suspected and confirmed cases of COVID-19](#)
- NCDC recently published the first edition of a quick reference guide on setting up sample collection centre - [A step by step guide on setting up a sample collection centre](#)
- NCDC has launched an online course on [Infection, Prevention and Control \(IPC\) for COVID-19](#) NCDC eLearning platform
- Ahead of forthcoming elections in the country, NCDC has issued [Guidelines for Conducting Elections During the COVID-19 Outbreak in Nigeria](#).
- To protect our elders, and those with pre-existing medical conditions, NCDC has issued an [Advisory for Vulnerable Groups](#).
- NCDC has released [guidelines on the re-opening of places for worship](#).
- NCDC has released [Strategies to Improve Surveillance for COVID-19 Guidance for States](#)
- The Nigeria Police Force has released COVID-19 operational guidelines for the [Police and other Law Enforcement Agencies in Nigeria](#)
- Guidelines have been issued for the [safe transportation of remains of persons suspected or confirmed to have died of COVID-19](#)
- Information on diagnostics of the COVID-19 virus can be found in our [detailed FAQ document](#).
- To increase our testing capacity, NCDC has issued guidelines for the [integration of private labs](#).
- Guidelines for [businesses and employers](#) have been updated.
- NCDC has updated its [case definition](#) , [community case definition](#) and [case management guide](#).
- NCDC releases periodic [public health advisories](#) to Nigerians on the COVID-19 disease.
- To adhere to post-lockdown measures, NCDC has released an [advisory on the use of face masks](#), as well as information on the [Use of Cloth face masks](#) and [how to make your cloth face masks](#).
- NCDC has released guidelines for the [management of pregnant women and nursing mothers](#) during the pandemic.
- To address burials of loved ones who die from COVID-19, guidelines have been issued to advise on the [management of dead bodies](#).
- For health centres managing cases, the following documents have been released- a guideline for the [Rational Use of Personal Protective Equipment in the care of COVID-19 cases](#).
- As part of plans to increase the testing capacity of the country, the NCDC published a [National Strategy to Scale Up Access to Coronavirus Disease Testing in Nigeria](#) document.
- The Presidential Task Force has published policies and announcements on COVID-19 [available on the website of the Presidency](#) – including presidential addresses, task force updates and information on livelihood and economic support.

## RESPONSE

On 28<sup>th</sup> February 2020, a multi-sectoral Emergency Operations Centre (EOC) was activated at Level 3 – the highest emergency level in Nigeria –led by NCDC in close coordination with the State Public Health EOCs (PHEOC).

- **Trained 60 laboratory scientists drawn from all Local Government Areas on sample collection in Imo State**
- **Trained nurses on Infection Prevention and Control from General Hospitals in Yenogoa, Bayelsa State**
- Concluded the Infection Prevention and Control (IPC) focal point improvement plan template review meeting with state focal persons and relevant stakeholders

- Added two (2) additional laboratories (Cedar Crest and DNAlabs) to the Nigeria International Travel Portal (NITP) to test international travellers in FCT
- Finalised plans to commence engagement with religious leaders to enhance community mobilisation in states in collaboration with partners
- Ongoing deployment of IPC materials and supplies to the laboratories in the network
- Produced new jingles and shared with Federal Ministry of Environment to increase community mobilisation
- All education materials can be found via [www.covid19.ncdc.gov.ng](http://www.covid19.ncdc.gov.ng)