

# COVID-19 SITUATION REPORT

## SITUATION REPORT 88

Tuesday, 26<sup>th</sup> May 2020



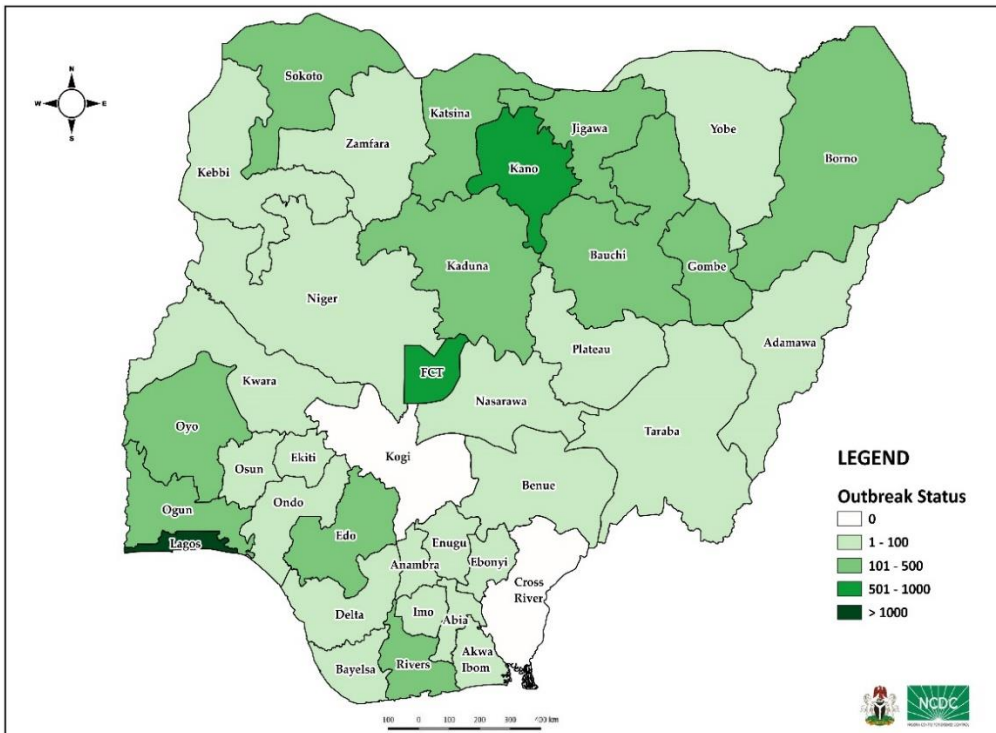
DATA AS REPORTED AND ACCURATE BY NCDC by Midnight 26<sup>th</sup> May 2020

### HIGHLIGHTS

- Two hundred and seventy-six (**276**) confirmed cases were reported in the last 24 hours in fifteen (**15**) states – Lagos (161), Rivers (36), Edo(27), Kaduna (19), Nasarawa (10), Oyo (6), Kano (4), Delta (3), Ebonyi (3), Gombe (2), Abia (1), Bauchi (1), Borno (1), Ogun (1) and Ondo (1).
- No new state recorded a confirmed COVID-19 case in the last 24 hours. The total number of states including FCT that have reported at least one confirmed case in Nigeria is still **35** (34 states + FCT).
- Seventy-four (**74**) cases were discharged in the last 24 hours in five (**5**) states – Bauchi (38), Plateau (16), Kaduna (12), Ogun (6) and Anambra (2).
- Sixteen (**16**) deaths were recorded in the last 24 hours in eight (**8**) states – Lagos (5), Bauchi (2), Edo (2), Oyo (2), Rivers (2), Anambra (1), Kaduna (1) and Ondo (1)

### STATE OF THE NATION

Figure 1: Map of Nigeria showing 34 states and FCT affected by COVID-19



### SITUATION UPDATES

Total (New in the last 24 hours)

SAMPLES TESTED

**48544 (1741)**

CONFIRMED CASES

**8344 (276)**

AFFECTED STATES INCLUDING FCT

**35 (0)**

DISCHARGED CASES

**2385 (74)**

CONFIRMED FATALITIES

**249 (16) – 3% CFR**

DEMOGRAPHICS

MALE – 5684 (**68%**)

FEMALE – 2660 (**32%**)

MOST AFFECTED AGE GROUP

31 - 40 (**25%**)

PEOPLE OF INTEREST

**10008 (Total)**

**9,890 (98.8% - Exceeded Follow Up)**

PROVENANCE

TRAVEL HISTORY – **210 (3%)**

CONTACTS – **1908 (23%)**

NO EPIDEMIOLOGIC LINK – **4622 (55%)**

INCOMPLETE – **1604 (19%)**

GLOBAL UPDATES

TOTAL NUMBER OF CASES

**5, 404, 512 (343, 514 deaths)**

COUNTRIES & TERRITORIES AFFECTED\*

**213**

\*Excluding the 2 International Conveyances

## GENERAL FACT SHEET – DATA AS AT MAY 26<sup>th</sup> 2020

Table 1: States with reported laboratory-confirmed COVID-19 cases, recoveries, deaths and days since last reported case

STATES	CONFIRMED CASES		DISCHARGED CASES		DEATHS		TOTAL ACTIVE CASES	DAYS SINCE LAST REPORTED CASE
	CUMULATIVE	NEW	CUMULATIVE	NEW	CUMULATIVE	NEW		
Lagos	3756	161	658	0	47	5	3051	0
Kano	923	4	134	0	38	0	751	0
FCT	519	0	156	0	14	0	349	1
Katsina	335	0	51	0	14	0	270	1
Borno	256	1	145	0	25	0	86	0
Oyo	250	6	76	0	6	2	168	0
Jigawa	241	0	78	0	4	0	159	4
Ogun	241	1	109	6	9	0	123	0
Bauchi	233	1	203	38	7	2	23	0
Edo	218	27	58	0	9	2	151	0
Kaduna	208	19	128	12	6	1	74	0
Rivers	157	36	32	0	11	2	114	0
Gombe	150	2	118	0	3	0	29	0
Sokoto	116	0	90	0	14	0	12	4
Plateau	95	0	43	16	2	0	50	1
Kwara	79	0	34	0	1	0	44	2
Zamfara	76	0	63	0	5	0	8	8
Nasarawa	56	10	18	0	2	0	36	0
Delta	49	3	14	0	7	0	28	0
Yobe	47	0	8	0	7	0	32	4
Osun	44	0	35	0	4	0	5	1
Ebonyi	36	3	6	0	0	0	30	0
Imo	33	0	7	0	0	0	26	1
Kebbi	32	0	17	0	4	0	11	9
Niger	28	0	9	0	1	0	18	2
Adamawa	27	0	18	0	2	0	7	5
Akwa Ibom	24	0	13	0	2	0	9	2
Ondo	24	1	19	0	2	1	3	0
Ekiti	20	0	14	0	2	0	4	6
Enugu	18	0	8	0	0	0	10	3
Taraba	18	0	10	0	0	0	8	6
Bayelsa	12	0	6	0	0	0	6	1
Anambra	10	0	3	2	1	1	6	1
Abia	8	1	3	0	0	0	5	0
Benue	5	0	1	0	0	0	4	10
<b>TOTAL</b>	<b>8344</b>	<b>276</b>	<b>2385</b>	<b>74</b>	<b>249</b>	<b>16</b>	<b>5710</b>	

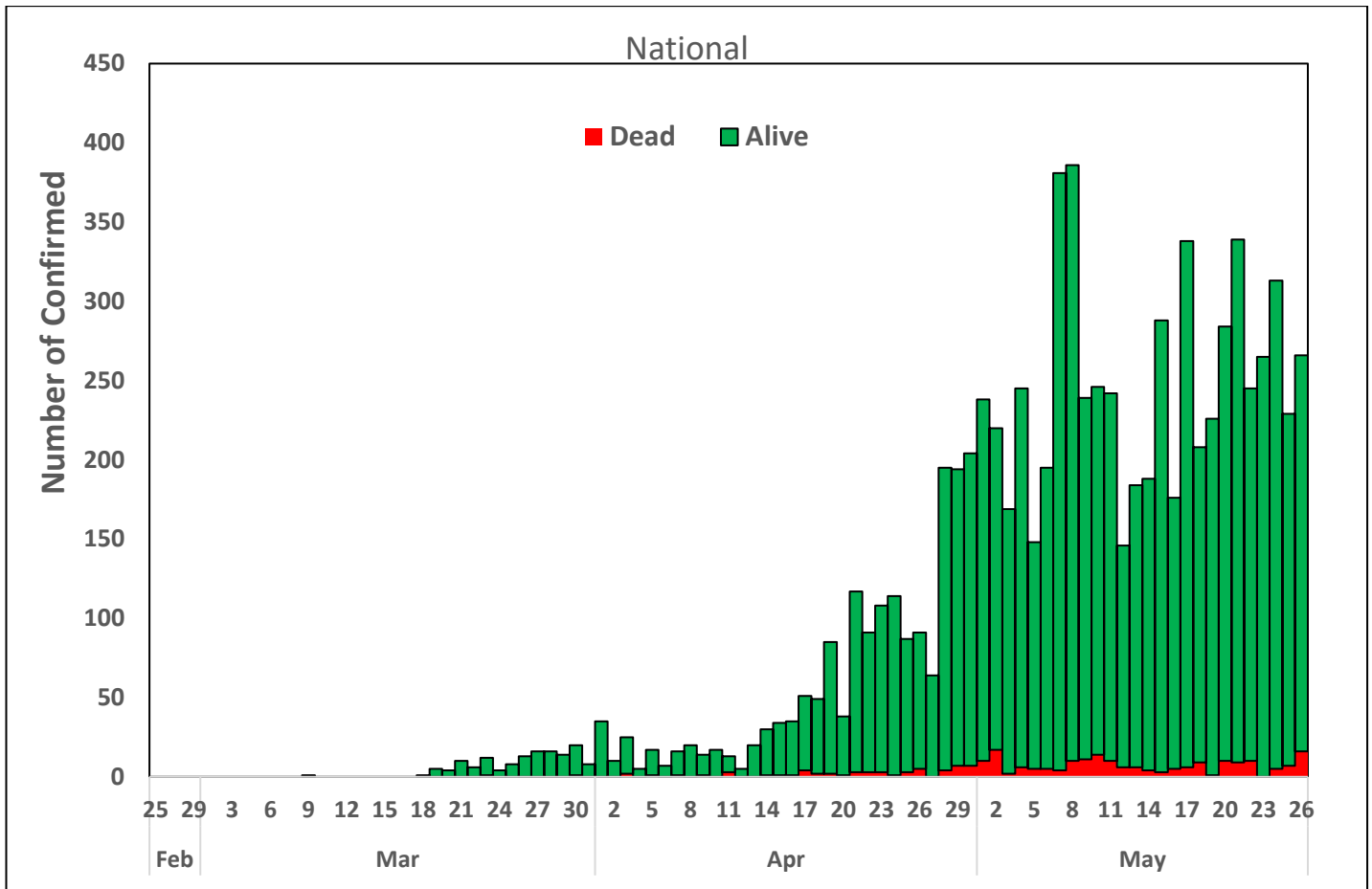
States including FCT are arranged in descending order by number of total confirmed cases

## TESTING BREAKDOWN BY STATES (AS AT 25 MAY 2020)

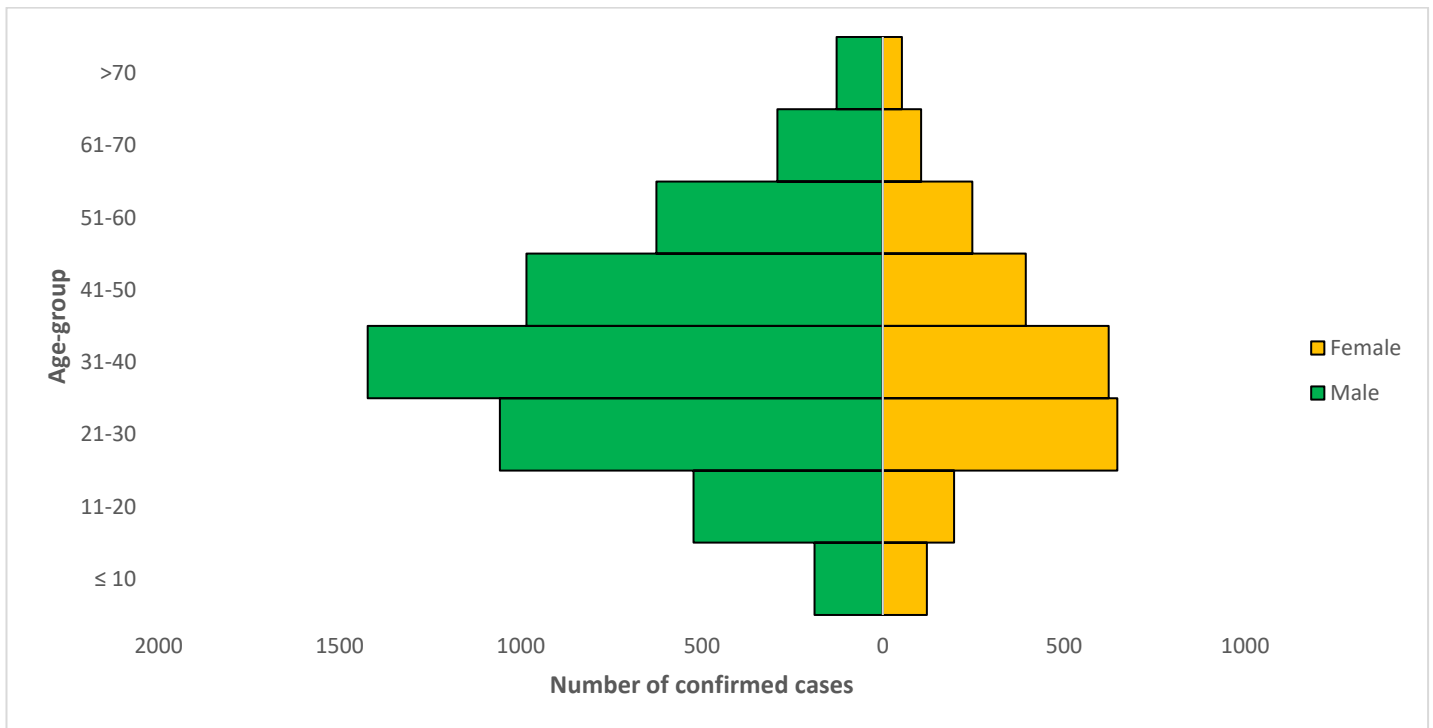
STATES	TOTAL CONFIRMED CASES	TESTS DONE TO DATE
LAGOS	3756	17907
FCT	519	6136
KANO	923	3965
OYO	250	2420
OGUN	241	1958
EDO	218	1434
JIGAWA	241	1295
KADUNA	208	1222
KATSINA	335	1216
GOMBE	150	1158
KWARA	79	1078
BORNO	256	985
BAUCHI	233	923
RIVERS	157	750
SOKOTO	116	618
OSUN	44	569
ONDO	24	510
DELTA	49	502
PLATEAU	95	476
NASARAWA	56	401
KEBBI	32	368
EBONYI	36	330
IMO	33	317
ZAMFARA	76	276
EKITI	20	275
ENUGU	18	207
NIGER	28	179
ANAMBRA	10	172
BENUE	5	156
AKWA IBOM	24	151
ABIA	8	139
TARABA	18	139
ADAMAWA	27	107
BAYELSA	12	103
YOBE	47	93
CROSS RIVER	0	8
KOGI	0	1
<b>Total</b>	<b>8344</b>	<b>48544</b>

## SELECTED CHARTS

**Figure 2: Daily Epidemic Curve of Confirmed Cases (WK9 – WK22)**



**Figure 3: Age-Sex Distribution of Confirmed Cases (WK9 – WK22)**



## PREPAREDNESS

Since the confirmation of the first case on 27<sup>th</sup> February 2020, the NCDC has released advisories and statements to help Nigerians and affected groups in particular to respond to the pandemic

- Information on diagnostics of the COVID-19 virus can be found in our [detailed FAQ document](#)
- To increase our testing capacity, NCDC has issued guidelines for the [integration of private labs](#).
- Guidelines for [businesses and employers](#) have been updated
- NCDC has updated its [case definition](#) , [community case definition](#) and [case management guide](#).
- Ahead of the Ramadan fasting period, an [Advisory for Ramadan](#) has been issued.
- NCDC releases periodic [public health advisories](#) to Nigerians on the COVID-19 disease.
- To adhere to post-lockdown measures, NCDC has released an [advisory on the use of face masks](#), as well as information on the [Use of Cloth face masks](#) and [how to make your cloth face masks](#).
- NCDC has released guidelines for the [management of pregnant women and nursing mothers](#) during the pandemic.
- To address burials of loved ones who die from COVID-19, guidelines have been issued to advise on the [management of dead bodies](#).
- NCDC has released a [Self-Isolation and Quarantine Guide](#) and [Mandatory institutional guideline for returnees to Nigeria](#) to help those who are exposed to COVID-19 confirmed cases or returnees to Nigeria.
- For health centres managing cases, the following documents have been released- a guideline for the [Rational Use of Personal Protective Equipment in the care of COVID-19 cases](#).
- As part of plans to increase the testing capacity of the country, the NCDC published a [National Strategy to Scale Up Access to Coronavirus Disease Testing in Nigeria](#) document.
- The Presidential Task Force has published policies and announcements on COVID-19 [available on the website of the Presidency](#) – including presidential addresses, task force updates and information on livelihood and economic support.

## RESPONSE

On 28<sup>th</sup> February 2020, a multi-sectoral Emergency Operations Centre (EOC) was activated at Level 3 – the highest emergency level in Nigeria –led by NCDC in close coordination with the State Public Health EOCs (PHEOC).

- **Activation of Afriglobal Medicare laboratory, Ogun and Sahel centre for Molecular Diagnostics and Research, Katsina**
- **Ongoing optimisation of Central Public Health Laboratory, Lagos (CPHL), National Intelligence Agency, Abuja and a state- owned laboratory in Bauchi**
- **Completed commodities distribution to National Hospital, Abuja and for the institutional isolation centres for returnees**
- **Developed community engagement strategies in collaboration with partners**
- **Ongoing IPC training of batch 6 healthcare workers in Kano state**
- Infection Prevention and Control (IPC) training for Safe Burial team and ambulance drivers in Borno state
- Ongoing support supervision of isolation centres and treatment centres in Edo, FCT, Jigawa, Lagos and Osun
- In Lagos, 139 Persons of Interest/returnees received
- Trained Military Healthcare Workers (HCWs) in Benue
- Ongoing training of staff of new designated Isolation centres on IPC in Abuja
- Ongoing intensive data gathering on patient’s management in all states
- All education materials can be found via [www.covid19.ncdc.gov.ng](http://www.covid19.ncdc.gov.ng)