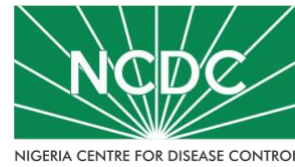


# COVID-19 SITUATION REPORT

## SITUATION REPORT 189

Friday, 4th September 2020



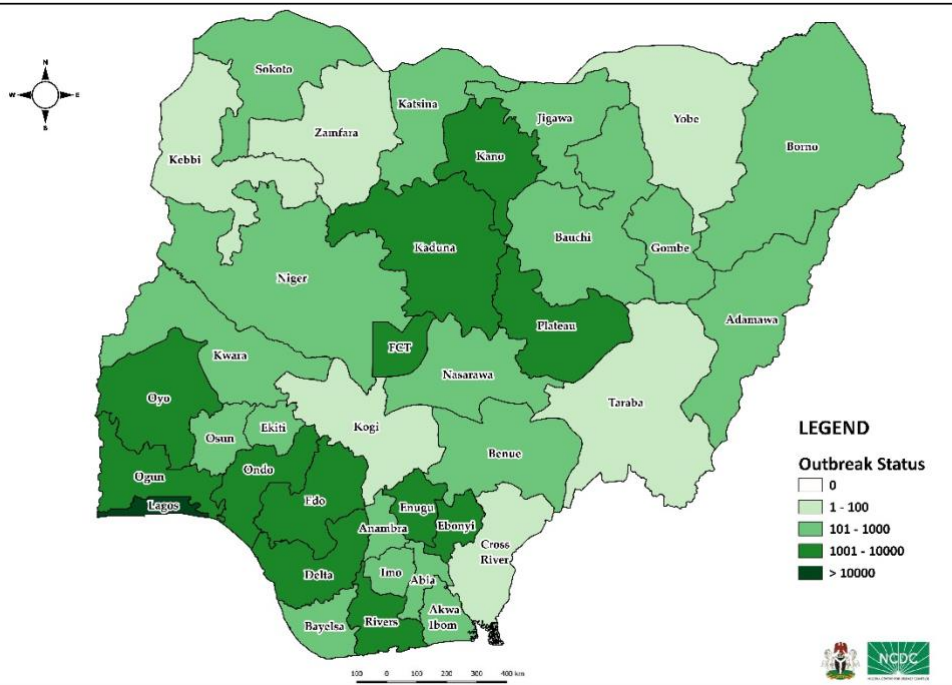
DATA AS REPORTED AND ACCURATE BY NCDC AS AT MIDNIGHT 4<sup>th</sup> SEPTEMBER 2020

### HIGHLIGHTS

- One hundred and fifty-six (**156**) confirmed cases were reported in the last 24 hours from **17** states – Lagos (36), FCT (35), Oyo (29), Kaduna (10), Abia (9), Enugu (5), Ogun (5), Osun (5), Rivers (4), Ekiti (3), Imo (3), Nasarawa (3), Edo (2), Katsina (2), Kwara (2), Plateau (2) and Niger (1).
- One hundred and eighty-nine (**189**) discharges have been reported in the last 24 hours in **13** states – Plateau (52), Ogun (34), Ekiti (25), Kaduna (20), Rivers (15), Kano (10), Kwara (10), Edo (7), FCT (6), Bauchi (4), Oyo (3), Bayelsa (2) and Osun (1).
- Three (**3**) deaths were reported in the last 24 hours in **one** state – FCT (3).
- All **36** states in Nigeria, and the FCT, have reported a confirmed case.

### STATE OF THE NATION

Figure 1: Map of Nigeria showing 36 states and FCT affected by COVID-19



### SITUATION UPDATES

Total (New in the last 24 hours)

SAMPLES TESTED

**420,543 (3,145)**

CONFIRMED CASES

**54,743 (156)**

AFFECTED STATES INCLUDING FCT

**37**

DISCHARGED CASES

**42,816 (189)**

CONFIRMED FATALITIES

**1,051 (3) – 1.9% CFR**

DEMOGRAPHICS

MALE – 34,767 (64%)

FEMALE – 19,976 (36%)

MOST AFFECTED AGE GROUP

31 - 40 (25%)

PERSONS OF INTEREST

**11,693 (Total)**

**11,645 (99.6% - Exceeded Follow Up)**

PROVENANCE

TRAVEL HISTORY – 850 (1%)

CONTACTS – 12,894 (24%)

UNKNOWN EXPOSURE – 40,999 (75%)

GLOBAL UPDATES

TOTAL NUMBER OF CASES

**26,171,112 (865,154 deaths)**

COUNTRIES & TERRITORIES AFFECTED

**216\***

\*Excluding the 2 International Conveyance

## GENERAL FACT SHEET – DATA AS AT 4<sup>th</sup> SEPTEMBER 2020

Table 1: States with reported laboratory-confirmed COVID-19 cases, recoveries, deaths and days since last reported case

STATES	CONFIRMED CASES		DISCHARGED CASES		DEATHS		TOTAL ACTIVE CASES	DAYS SINCE LAST REPORTED CASE
	TOTAL	NEW	TOTAL	NEW	TOTAL	NEW		
Lagos	18,255	36	15,233	0	202	0	2,820	0
FCT	5,273	35	1,591	6	63	3	3,619	0
Oyo	3,168	29	1,958	3	37	0	1,173	0
Plateau	2,710	2	1,690	52	30	0	990	0
Edo	2,594	2	2,361	7	100	0	133	0
Kaduna	2,184	10	2,071	20	32	0	81	0
Rivers	2,172	4	2,023	15	57	0	92	0
Delta	1,756	0	1,595	0	48	0	113	1
Kano	1,727	0	1,601	10	54	0	72	4
Ogun	1,676	5	1,597	34	26	0	53	0
Ondo	1,550	0	1,380	0	32	0	138	1
Enugu	1,184	5	1,088	0	21	0	75	0
Ebonyi	1,005	0	941	0	27	0	37	2
Kwara	976	2	794	10	25	0	157	0
Katsina	812	2	457	0	24	0	331	0
Abia	807	9	712	0	8	0	87	0
Osun	795	5	744	1	17	0	34	0
Borno	741	0	671	0	36	0	34	4
Gombe	723	0	641	0	23	0	59	6
Bauchi	669	0	637	4	14	0	18	2
Imo	532	3	210	0	11	0	311	0
Benue	460	0	291	0	9	0	160	3
Nasarawa	437	3	298	0	12	0	127	0
Bayelsa	391	0	360	2	21	0	10	6
Jigawa	322	0	308	0	11	0	3	50
Ekiti	281	3	244	25	5	0	32	0
Akwa Ibom	280	0	238	0	8	0	34	2
Niger	244	1	216	0	12	0	16	0
Adamawa	228	0	180	0	15	0	33	4
Anambra	219	0	181	0	19	0	19	1
Sokoto	159	0	142	0	16	0	1	4
Kebbi	93	0	82	0	8	0	3	7
Taraba	87	0	73	0	5	0	9	10
Cross River	83	0	73	0	8	0	2	1
Zamfara	78	0	73	0	5	0	0	15
Yobe	67	0	59	0	8	0	0	36
Kogi	5	0	3	0	2	0	0	63
<b>Total</b>	<b>54,743</b>	<b>156</b>	<b>42,816</b>	<b>189</b>	<b>1,051</b>	<b>3</b>	<b>10,876</b>	

States, including FCT, are arranged in descending order by number of total confirmed cases and then alphabetical order

## SELECTED CHARTS

Figure 2: Daily Epidemic Curve of Confirmed Cases (WK9 – WK36)

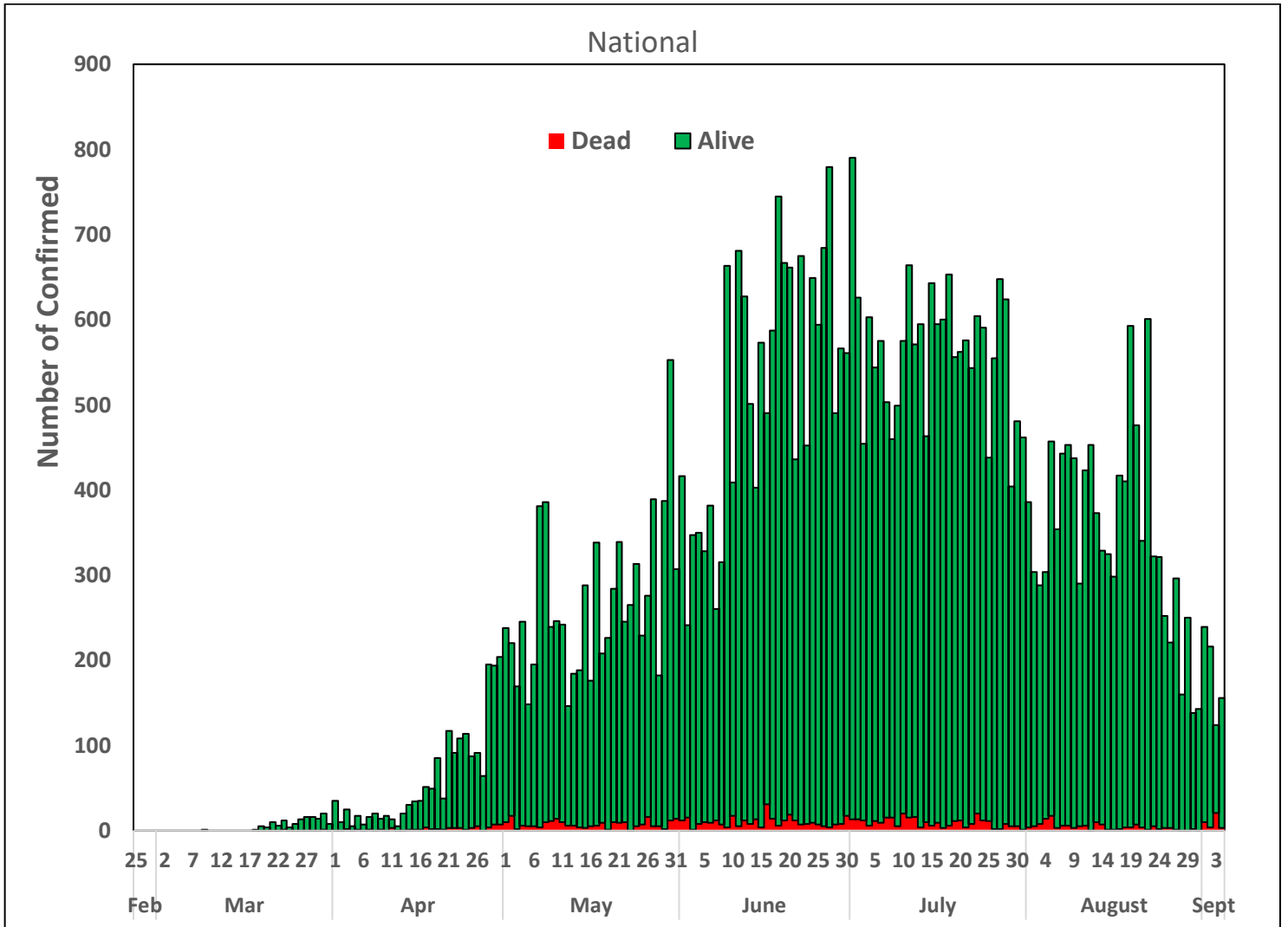
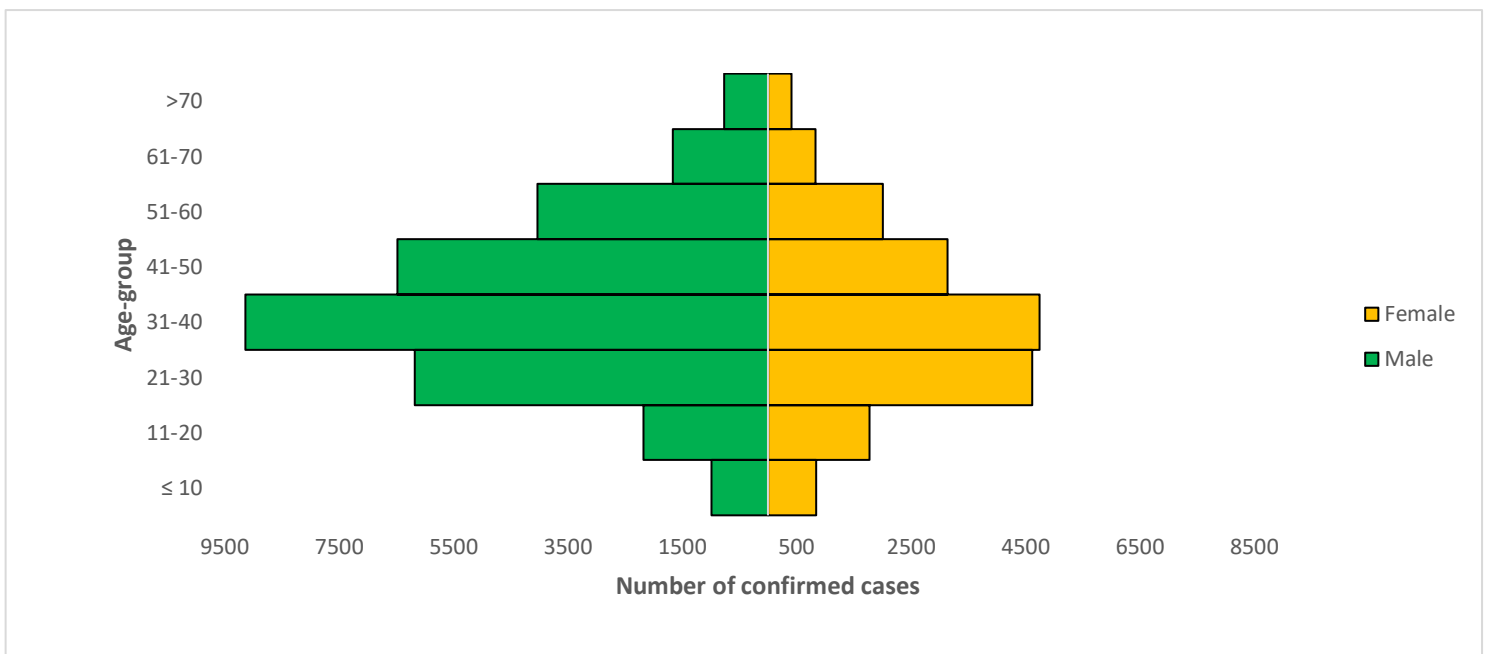


Figure 3: Age-Sex Distribution of Confirmed Cases (WK9 – WK36)



## PREPAREDNESS

Since the confirmation of the first case on 27<sup>th</sup> February 2020, the NCDC has released advisories and statements to help Nigerians and affected groups in particular to respond to the pandemic

- NCDC recently published the first edition of a quick reference guide on setting up sample collection centre - [A step by step guide on setting up a sample collection centre](#)
- NCDC has launched an online course on [Infection, Prevention and Control \(IPC\) for COVID-19](#) NCDC eLearning platform
- Ahead of forthcoming elections in the country, NCDC has issued [Guidelines for Conducting Elections During the COVID-19 Outbreak in Nigeria](#).
- To protect our elders, and those with pre-existing medical conditions, NCDC has issued an [Advisory for Vulnerable Groups](#).
- NCDC has released [guidelines on the re-opening of places for worship](#).
- NCDC has released [Strategies to Improve Surveillance for COVID-19 Guidance for States](#)
- The Nigeria Police Force has released COVID-19 operational guidelines for the [Police and other Law Enforcement Agencies](#) in Nigeria
- Guidelines have been issued for the [safe transportation of remains of persons suspected or confirmed to have died of COVID-19](#)
- Information on diagnostics of the COVID-19 virus can be found in our [detailed FAQ document](#).
- To increase our testing capacity, NCDC has issued guidelines for the [integration of private labs](#).
- Guidelines for [businesses and employers](#) have been updated.
- NCDC has updated its [case definition](#) , [community case definition](#) and [case management guide](#).
- NCDC releases periodic [public health advisories](#) to Nigerians on the COVID-19 disease.
- To adhere to post-lockdown measures, NCDC has released an [advisory on the use of face masks](#), as well as information on the [Use of Cloth face masks](#) and [how to make your cloth face masks](#).
- NCDC has released guidelines for the [management of pregnant women and nursing mothers](#) during the pandemic.
- To address burials of loved ones who die from COVID-19, guidelines have been issued to advise on the [management of dead bodies](#).
- For health centres managing cases, the following documents have been released- a guideline for the [Rational Use of Personal Protective Equipment in the care of COVID-19 cases](#).
- As part of plans to increase the testing capacity of the country, the NCDC published a [National Strategy to Scale Up Access to Coronavirus Disease Testing in Nigeria](#) document.
- The Presidential Task Force has published policies and announcements on COVID-19 [available on the website of the Presidency](#) – including presidential addresses, task force updates and information on livelihood and economic support.

## RESPONSE

On 28<sup>th</sup> February 2020, a multi-sectoral Emergency Operations Centre (EOC) was activated at Level 3 – the highest emergency level in Nigeria –led by NCDC in close coordination with the State Public Health EOCs (PHEOC).

- **Ongoing training of staff at GeneXpert laboratories across the country**
- **Conducted sensitisation for civil society organisations (CSOs) on Infection Prevention and Control in Katsina State**
- **Working with NCDC Technical Advisors in the states to strengthen mobilisation of partners` support for further strengthening of COVID-19 grass root interventions**
- Supported the Federal Ministry of Education (FMOE) to develop operational plans, surveillance flow charts and reporting templates to guide school response based on the guidelines on school reopening
- Conducted IPC training for State Emergency Operation Centre (EOC) members in Zamfara State

- Commenced perception survey to understand to understand perception of stakeholders on COVID-19, the risk to student and their roles when schools reopen
- All education materials can be found via [www.covid19.ncdc.gov.ng](http://www.covid19.ncdc.gov.ng)